



- DESCRIPTION:** Teams will design and build a cantilevered beam or truss structure that extends from a vertical Testing Wall and supports a load at a specified distance from the Testing Wall. The structure must meet the requirements specified in these rules to achieve the highest score, which is a combination of structural efficiency and Load Score Bonus.

A TEAM OF UP TO: 2

APPROXIMATE TIME: 10 minutes

EYE PROTECTION: B

2. EVENT PARAMETERS:

- Only one Structure designed and built by the team may be entered, built prior to competition.
- Eye Protection B protective eyewear must be worn during competition (required ANSI marking: Z87+).
- Design Knowledge: Participants must be able to answer questions on design, construction & operation.
- Test Apparatus will be supplied by the Event Supervisor. Participants may not measure or adjust Test Apparatus or bring any equipment, tools or instruments.

3. CONSTRUCTION PARAMETERS:

- Single Structure: no separate, loose or detachable parts or pieces.
- The structure is constructed of wood, bonded by adhesive (7.a. – 7.d.). No other materials permitted.
- Structure attaches to the testing wall by resting on the Mounting Bolt Assembly (6.b.v.).
- Structure supports only the Loading Block of the Loading Assembly (6.c.i.) which supports the balance of the Loading Assembly.
- Structure supports the Loading Assembly (6.c.) with the centerline of the chain being:
 - at least 40 cm but no more than 45 cm when measured horizontally from the Testing Wall (6.b.).
 - no more than 2.5 cm horizontally from either side of a perpendicular line extending from the centerline of the Testing Wall.

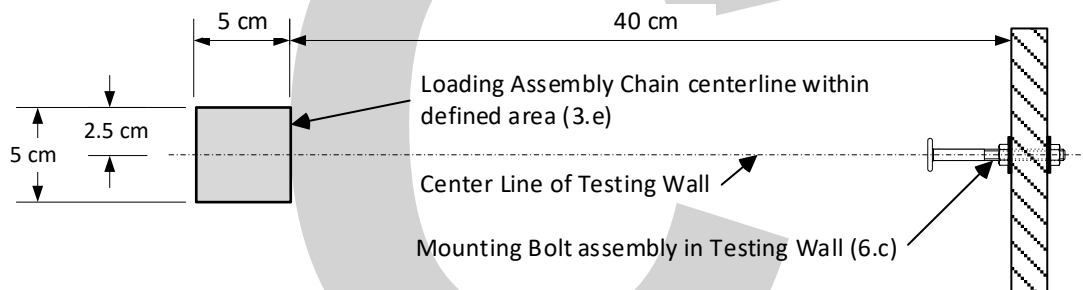


Figure 1: Top view of Test Wall (not to scale)

- During the Competition testing, the Boomilever may ONLY touch the Testing Wall OUTSIDE the Vertical Contact Width Lines.
- Base vs. Load Score Bonus Options:
 - Base Option:
 - During the Competition testing, the Boomilever may ONLY touch the Testing Wall BETWEEN the 10 cm and 15 cm Horizontal Contact Depth Lines (6.b.) and
 - Prior to loading sand, the bottom of the Loading Block must be supported ABOVE the horizontal plane extending from the 15 cm Horizontal Contact Depth Line (6.b.).
 - OR - Load Scored BONUS option scored if the following requirements are met in place of 3.g.i.:
 - During the Competition testing, the Boomilever may ONLY touch the Testing Wall ABOVE the 10 cm Horizontal Contact Depth Line (6.b.) and
 - Prior to loading sand, the bottom of the Loading Block must be supported ABOVE the horizontal plane extending from the 10 cm Horizontal Contact Depth Line (6.b.) and
 - The structure must hold 15 kg.

4. COMPETITION:

- Prior to competition, the Event Supervisor will:
 - Verify all Test Apparatus are available and properly set-up per section 6.
 - Verify the mass of the Loading Assembly meets requirements of 6.c.v.
 - Verify that the combined mass of the Loading Assembly (6.c.) and sand (6.d.) is at least 15,100 g.



but no more than 15,200 g.

b. Check-in:

- i. Once participants begin check-in they may NOT leave or gain any outside assistance, materials or communications (including cell phone communication) until Testing is completed.
- ii. No alterations may be made once check-in begins.
- iii. Event Supervisor or Assistant will begin check-in:
 - (1) Verify participants have proper Eye Protection (2.b.).
 - (2) Inspect Structure design and construction materials (3.a., 3.b.).
 - (3) Teams will submit their Estimated Load Supported (4.c.vi.) to be used as a Tiebreaker (5.e.).
 - (4) Participants place structure on the Structure Scale (6.f.) so the Event Supervisor or Assistant can determine the structure mass to the nearest 0.01 gram or best precision available.

c. Testing:

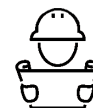
- i. Teams will have 6 minutes to set up and test their Structure on the Testing Wall with the Loading Assembly. If necessary, participants may disassemble the Loading Assembly but must reassemble in the same order as presented by the Event Supervisor (6.c.). The bucket must be mounted to allow enough clearance above the floor for the bucket to tilt or the Structure to deflect.
- ii. The Event Supervisor will check before loading with sand begins:
 - (1) Conformity to the requirements 3.c., 3.d., 3.e., and 3.f.
 - (2) Conformity to requirements 3.g.i. or 3g.ii. to determine if the structure meets construction requirements for Load Scored Bonus.
 - (3) The bucket is suspended to have clearance above the floor for testing.
- iii. Structure may not be adjusted once loading of sand has begun.
- iv. Participants will load sand. Bucket may only be stabilized from movement by the tips of Bucket Stabilizing Sticks (6.e.).
- v. Loading Stops immediately when the Structure fails, the load is supported by anything other than the Structure, or time expires. At the Supervisors discretion, sand may be removed from the bucket if pouring continued after the Structure fails or time expires.
- vi. Load Supported is determined and recorded to the nearest gram. Load Supported is the combined mass of the Loading Assembly (6.c.) and Sand (6.d.) in the Bucket, with any parts of the Structure in the Bucket removed prior to measurement.
- vii. The Minimum Load Supported is the mass of the Loading Assembly (6.c.). If a Structure cannot hold the Loading Assembly (6.c.), the Structure is placed in Tier 3, unable to be loaded.
- viii. The Maximum Load Supported is 15,000 g.
- ix. Test Data Review. The Event Supervisor will review with the team the data recorded on their scoresheet. Once data is acknowledged by the team, the Testing is complete.
- x. Teams who wish to file an appeal must leave their Structure with the Event Supervisor.

5. **SCORING:**

- a. High Score Wins. Score = Load Scored (5.c.) / Structure Mass (4.b.iii.4.).
- b. Load Scored Bonus: meeting the Load Scored BONUS construction parameters (3.f.ii.). Bonus = 5,000 g.
- c. Load Scored = Load Supported (4.c.vi.) + Load Scored Bonus (5.b.).
- d. Structures will be placed in one of 3 tiers.
 - i. Tier 1: meeting all construction and competition requirements.
 - ii. Tier 2: NOT meeting any one or more of the construction, competition requirements.
 - iii. Tier 3: Unable to be loaded, not supporting the minimum load (4.c.vii.), or no eye protection. Ranked by the mass of the structure from lowest structure mass to heaviest.
- e. Tiebreakers
 - i. Estimated Load Supported: closest to actual load supported.
 - ii. Lowest Structure mass.

6. **TEST APPARATUS:**

- a. In-Person tournaments: The Event Supervisor will provide all Test Apparatus. At the Event Supervisor's discretion, more than one Test Apparatus may be used.
- b. The Testing Wall
 - i. Solid and rigid surface at least 40.0 cm wide x 30.0 cm high. Constructed of ¾" grade plywood or other suitable material, with a smooth, hard, low friction surface that does not bend when loaded. The Testing Wall must be adjusted to be plumb vertical by the Event Supervisor utilizing a 9"



- torpedo level or similar method.
- ii. One Mounting Bolt hole no larger than 0.266-inch diameter must be drilled through the wall located approximately 5.0 cm below the top of the Testing Wall and halfway between the sides of the wall. The horizontal and vertical centerlines of the Mounting Bolt hole must be marked on the face of the Testing Wall.
- iii. Horizontal Contact Depth Lines must be clearly visible on the Testing Wall. They must be drawn at 10 cm, 15 cm, and 20 cm and below the center of the Mounting Bolt hole.
- iv. Two vertical Contact Width Lines must be clearly visible on the Testing Wall. They will be drawn 4.0 cm to the right and left side of the center of the Mounting Bolt hole.

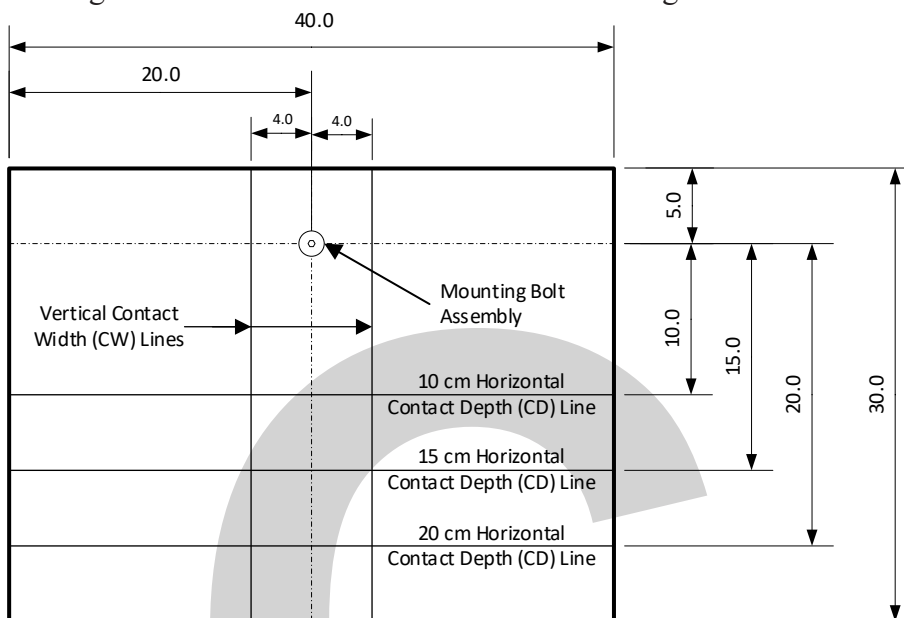


Figure 2 – Testing Wall (not to scale, dimensions in cm)

- v. The Mounting Bolt Assembly
 - (1) The Mounting Bolt Assembly will consist of:
 - (a) Connector Bolt, $\frac{1}{4}$ -20 x 2.36 inches (60 mm) long, with a 0.66-inch (17 mm) diameter head and 0.78 inch (20 mm) unthreaded section, 1 required. (Figure 3)

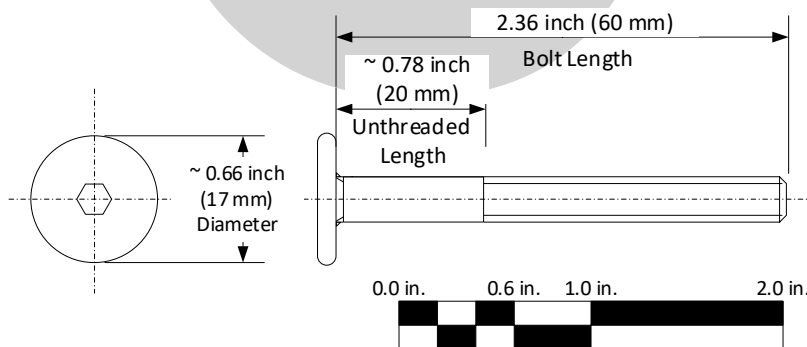
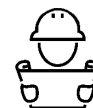


Figure 3 - Connector Bolt, $\frac{1}{4}$ -20 x 2.36 inches (60 mm) long

- (b) Hex Nut, American National Standard, $\frac{1}{4}$ – 20, 0.23-inch-thick maximum, 2 required.
 - (c) Flat Washer, USS $\frac{1}{4}$ inch, approx. $\frac{3}{4}$ inch outside diameter x 0.09-inch-thick maximum, 2 required.
 - (2) The Mounting Bolt Assembly will be secured in place on the Testing Wall by the Event Supervisor as follows:
 - (a) The Connector Bolt will have a hex nut and flat washer on the front side of the Testing Wall and a hex nut and flat washer on the back side of the Testing Wall.
 - (b) Connector Bolt is installed to allow 3.0 cm +/- 0.1 cm (1.18 inch +/- 0.03 inch) clearance between the closest face of the Connector Bolt to the Testing Wall and the Testing Wall face



(Figure 4).

- (c) The nuts must be tightened firmly to hold the bolt in place during the competition.
- (d) Teams may not adjust or disassemble the Mounting Bolt Assembly.

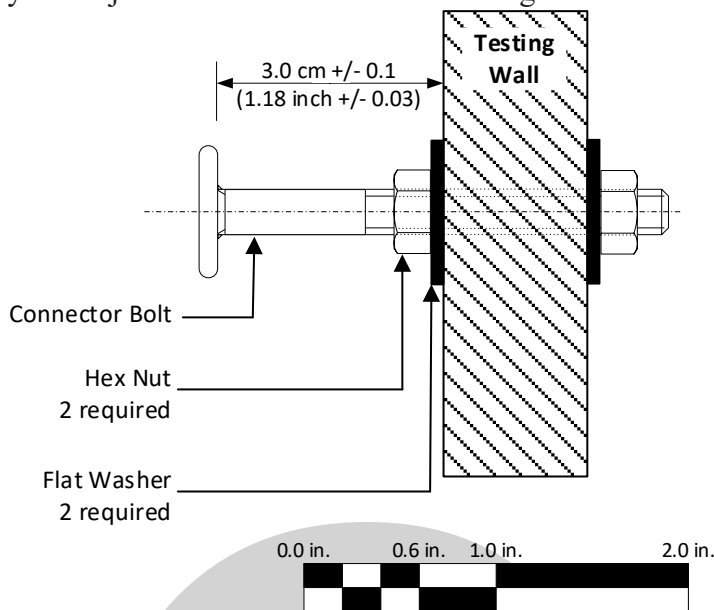


Figure 4 – Mounting Bolt Assembly in Testing Wall

- c. The Loading Assembly will consist of:
 - i. A square Loading Block measuring 5 cm x 5 cm x approximately 2 cm high with a hole no larger than 0.266-inch diameter drilled in the center of the 5 cm x 5 cm faces for a 1/4" threaded eyebolt.
 - ii. A 1/4 inch threaded eyebolt (1-inch nominal eye outside diameter) with an overall length no longer than 3 inches and a 1/4 inch wing nut. The Loading Block must be mounted on the eye bolt and be trapped between the "eye" of the eye bolt and the wing nut.

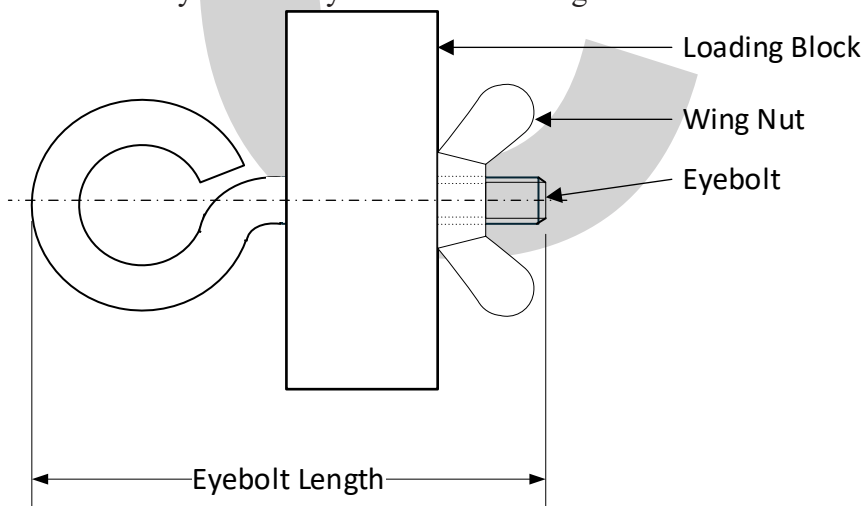


Figure 5 – Loading Block with eyebolt and wing nut (not to scale)

- iii. A chain and S-hook that are suspended from the eyebolt on the Loading Block.
- iv. A five-gallon plastic bucket with handle and hook to be suspended from the chain.
- v. The total combined mass of the Loading Assembly may not exceed 1,500 g.

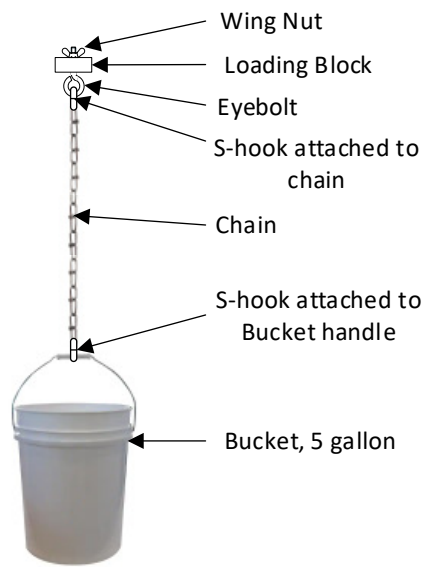
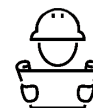


Figure 6 – Loading Assembly (not to scale)

- d. Sand: Load will be applied using sand.
- e. Two (2) Bucket Stabilizing Sticks each made from a piece of $\frac{1}{2}$ " dowel approximately 18 inches long with a spring-type doorstop screwed into one end.



Figure 7 – Stabilizing Stick (not to scale)

- f. Structure scale: Must be a digital scale. The scale is recommended to have a minimum range of 0 to 100 grams with a recommended resolution of 0.01 gram and minimum resolution of 0.1 grams.
- g. Sand scale and load verification: Must be a digital scale. The scale is recommended to have a range of 0 to 25,000 grams and a minimum range of 0 to 16,000 grams. The scale is recommended to have a resolution of 1 gram and a minimum resolution of 10 grams.

7. DEFINITIONS:

- a. *Wood* is defined as the hard, fibrous substance making up the greater part of the stems, branches, trunks, and roots of trees beneath the bark. Wood does NOT include bark, particleboard, wood composites, bamboo or grasses, paper, commercially laminated wood (i.e., plywood), or pieces formed of sawdust, wood shavings, and adhesive. Wood may never be painted, soaked, or coated in glue, chemically modified, color enhanced, or have tape/preprinted/paper labels affixed. Ink barcodes or markings from the construction process may be left on the wood.
- b. *Wood Size*: There are no limits on the cross-sectional sizes of individual pieces of wood.
- c. *Lamination*: multiple layers of wood may be glued together by the team without restriction. Commercially laminated wood is not allowed.
- d. *Adhesive* is a substance used to join two or more materials together and may be used only for this purpose. Any commercially available adhesive may be used (e.g., glue, cement, cyanoacrylate, epoxy, hot melt, polyurethane, and super glue). Adhesive tapes are not allowed.
- e. *Connector Bolt* can be found at several stores including Ace Hardware, Fleet Farm, Home Depot, Lowes, Menards, and Amazon. The bolt is sold under the following brand names: Hillman, Everbilt, and Midwest Fastener. The Connector bolt is typically in the specialty fasteners section in a drawer labeled “Furniture Parts”. The Bolt comes in at least 4 finishes: Black, Brass, Bronze and Nickel. The black finish being preferred, but any of the listed finishes may be used.
- f. *Sand* is defined as a clean, dry, free-flowing material of a similar density and flowability characteristics to play sand.

This event is supported by Cleveland-Cliffs Foundation and SkyCiv